

DT20

Equipment for cleaning the ducts of chimneys and tubular heat exchangers

It is the ideal tool for chimney sweeps, for the effortless and effective removal of soot and solid particles, which are produced during the combustion of pellets, firewood or coal, thus avoiding chimney fires or carbon monoxide poisoning. This mechanical brushing equipment with a flexible rotating shaft, has a brush rotation speed controller, is very portable and lightweight, small enough to carry with one hand.

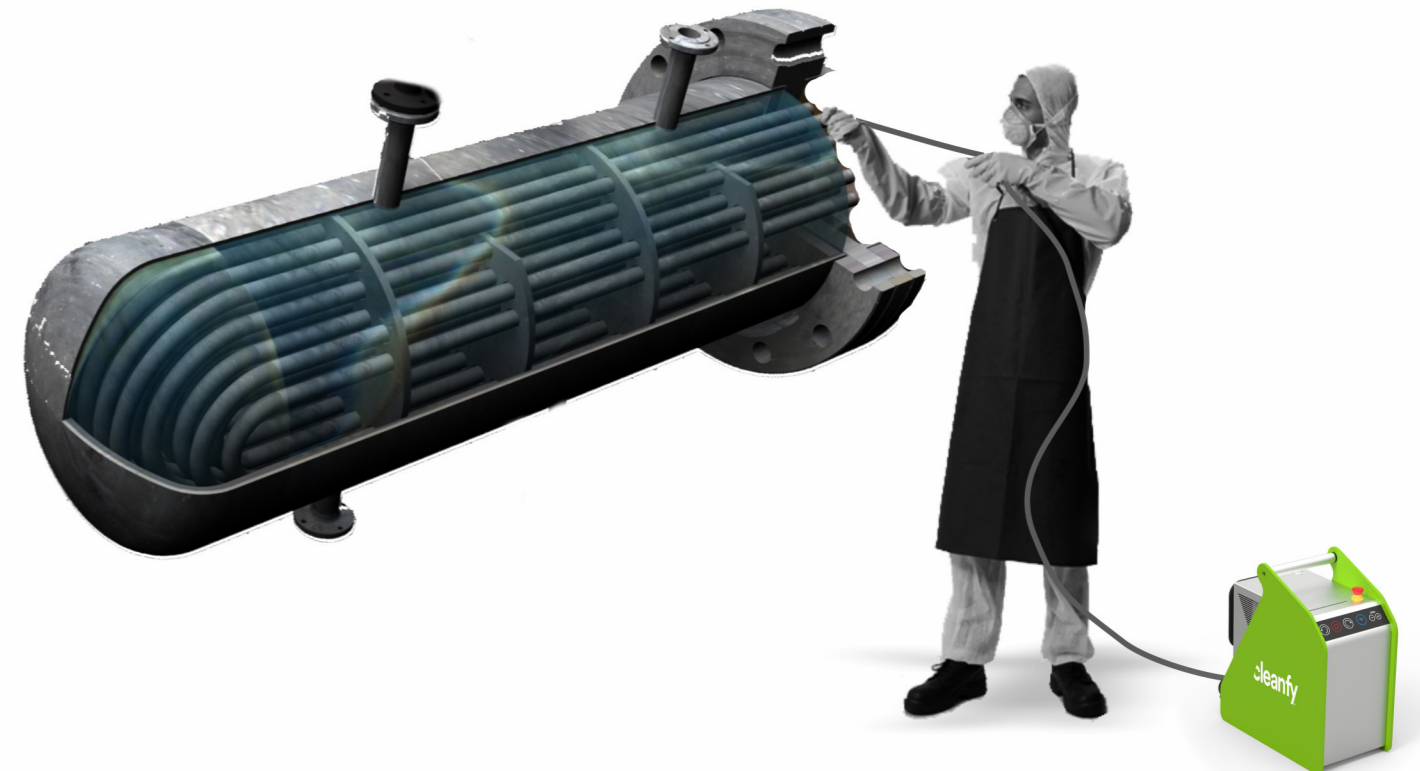
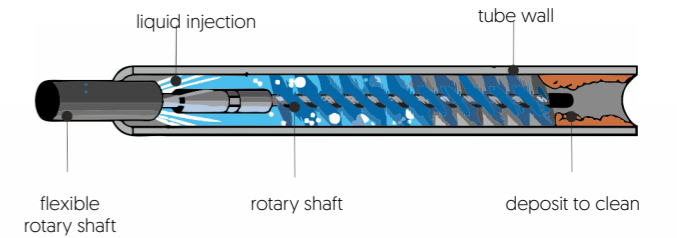
230V-50Hz | CF3120628 |
110V-60Hz | CF3120629 |



- VARIABLE SPEED
- ROTATING SHAFT BRUSHING
- BI-DIRECTIONAL ROTATION
- REMOTE CONTROL
- LOW PRESSURE RINSING
- MAINS WATER CONNECTION

CLEANING OF EXCHANGER TUBES

A heat exchanger is designed for heat transfer between two media tubulars, through which fluids pass, which leave behind dirt incrustations. It is essential to keep the interior clean of these tubes for optimum performance and avoid economic losses.



CHIMNEY SWEEPING WORK

Soot and other solid particles, produced by during combustion in stoves, boilers and chimneys, are deposited on the walls of the smoke evacuation ducts. These tanks reduce the draught of the chimney, and increase consumption, since it causes a decrease in the performance of this equipment and increases fuel consumption. In addition, a dirty duct produces bad odors and increases the risk of fire.



APPLICATIONS ▼



OPTIONAL ACCESSORIES ▼



WRIST REMOTE CONTROL

COD. AC3303605



Ø 10 mm ROTATING SHAFT

For brushes from Ø 30 mm to 400 mm
COD. AC3303607



Ø 6 mm ROTATING SHAFT

For brushes from Ø 12 mm to 20 mm
COD. AC3303606

CONSUMABLES ▼

HEAT EXCHANGERS ▼



NYLON BRUSH PACK

Ø 6 mm shaft: Ø12, 14, 16, 18 and 20 mm

COD. CP2080034

Ø 10 mm shaft: Ø30, 40, 50, 60, 70 y 80mm

COD. CP2080037



STEEL BRUSH PACK

Ø 6 mm shaft: Ø12, 14, 16, 18 y 20 mm

COD. CP2080036

Ø 10 mm shaft: Ø30, 40, 50, 60, 70 y 80mm

COD. CP2080038

CHIMNEYS ▼



NYLON BRUSH PACK

Ø 10 mm shaft: Ø100, 150, 200, 250, 300 y 400 mm

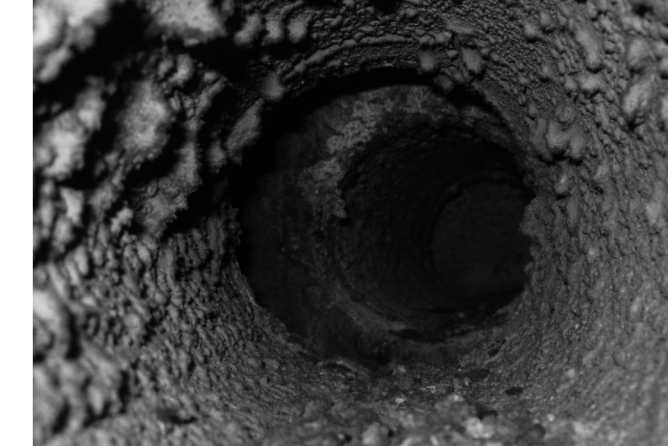
COD. CP2080039



STEEL BRUSH PACK

Ø 10 mm shaft: Ø100, 150, 200, 250, 300 y 400 mm

COD. CP2080040



TECHNICAL SPECIFICATIONS

Power supply	230 V - 50 Hz 110 V - 60 Hz
Hydraulic power supply	Pressure mín. 2 bar Pressure min. 29 psi
Maximum outlet pressure	6 bar 87 psi
Engine power	0,37 kW 0,5 HP
Engine rotation speed:	0 - 3000 r.p.m.
Engine operating speed	0 - 500 r.p.m.
Direction of rotation	Right / Left
Control panel	Membrane keyboard
Control system	Electric
Structural material	Stainless steel and HDPE
Hose length	10 m 33 ft 15 m 50 ft
Dimensions [L x A x Al]	436 x 221 x 457 mm 17 x 8,7 x 17,9 inches
Weight	17 kg 37,5 lb